

Marine Surveyors, Investigators & Claims Settling Agents

Todd & Associates, Inc.

2390 Shelter Island Drive Suite 220
San Diego, CA 92106

TODD & ASSOCIATES, INC.
MARINE SURVEYORS, CLAIMS SETTLING AGENTS & INVESTIGATIONS

STOLEN VESSEL

2005 Nortech 4300 Vee & 2005 Myco Trailer

- Upholstery: White
- Canvas: Blue cockpit cover
- Closed bow
- Livorsi platinum gauges



- Engine: T/1000 565cc Quad Rotors by Teague Custom Marine w/#6 Drives

- Eng Sr #'s: TCM564948, TCM564949

- Engine hatch cover: White w/"Nor-Tech"

- Trailer: 2005 Myco aluminum triple axle trailer, MWA40-42XHTR

- Trailer VIN #: 4JFBA43375B006022

- TX Trailer License: 43 VEE



HIN #: AOV43023J405

Documentation #: 1170242

LOCATION OF INCIDENT: Derebery Performance Marine
Highport Road, Pottsboro, TX 75076
DATE OF INCIDENT: November 23, 2007
POLICE AGENCY: Grayson County Sheriff (903) 813-4200
Report #: 314008

up to \$50,000.00 **REWARD** up to \$50,000.00

A reward is being offered by various insurance company interests for information leading to the safe return and recovery of the above vessel. Reward amounts for information leading to the safe return and recovery of the vessel shall be determined based on the strength of information and shall be at the sole discretion of the carrier. Assured, relatives of assured, employees of entity offering reward, or law enforcement officials are ineligible for reward for recovery. With any information, call collect or immediately notify your local law enforcement agency.

TODD & ASSOCIATES, INC.
(800) 325-8061 or (619) 226-1895 Fax: (619) 223-8942
stolenboats@boatman.com http://www.boatman.com

November 27, 2007-07-1307
2390 Shelter Island Drive #220

San Diego, CA 92106

BSIS #21305
www.boatman.com

Damage Investigations & Stolen Boats

In 1992, Todd & Associates specializes in accident and damage investigations and marine casualties, insurance claim resolution, forensic investigations, litigation support and accident reconstruction.

In 1994 we created the 1st Internet site to post Stolen Vessels with Rewards. Visitors to Todd & Associates' website have been identified primarily as law enforcement and the boating public. At the site, 'Wanted' posters may be viewed, downloaded, and printed. This two pronged approach of posting a stolen vessel on our Internet site, with simultaneous distribution of a targeted geographic location Email blast, 'Wanted' posters have proven to be a highly effective method for vessel recoveries and an efficient utilization of limited resources available for providing adequate investigations.

Working with the worldwide network of International Association of Marine Investigators (IAMI), insurance adjusters and special investigators, as well as our network of associates including marine surveyors and private investigators, our office has developed a nationwide network to assist in stolen boat investigations and recoveries.

Our office is now again traveling internationally, as well as Nationwide, and has a vast network of Associates.

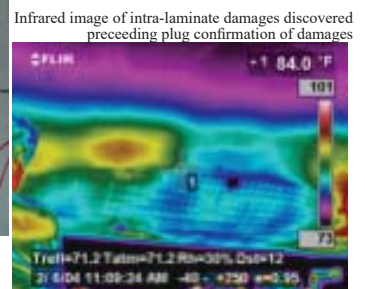
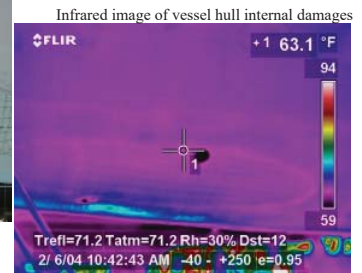
stolenboats@boatman.com

(619) 226-1895 or (800) 325-8061

<http://www.boatman.com>

Thermographic Inspections

In 1996 Todd & Associates recognized the advantages of utilizing Infrared Imaging in vessel non-destructive inspections, water intrusion to hull composite materials, internal structural failures and other damages are readily observable using our FLIR thermal imaging equipment. The non-destructive inspection assists in damage assessment, reduces removal repair expense, and provides technical mapping of composite materials. Having completed over 1,050 marine composite thermal inspections, and with over 20 years experience Todd & Associates, Inc. has become the leading expert in marine infrared thermography of composites.



Marine Engineering/Accident Reconstruction

Bill Trenkle, Marine Surveyor, was elected to the International America's Cup Hall of Fame this past year, as well as elected to be President of the Society of Accredited Marine Surveyors and a Marine Engineer, a Certified Marine Investigator, and Level I Thermographer. Bill specializes in complicated marine claims, including expertise in high-tech composites, offshore racing vessels, construction deficiencies & machinery analysis, & expert witness litigation support.

Maxwell Todd Schwede is also an Accredited Marine Surveyor, a Certified Marine Investigator, a Certified Fraud Examiner & a Lever III Infrared Thermographer.

Marine Surveyors, Investigators & Claims Settling Agents

Todd & Associates, Inc.

2390 Shelter Island Drive Suite 220
San Diego, CA 92106

For Immediate Release

July 2021

San Diego, CA – Todd & Associates has expanded our offered services to maintain a high degree of technology, and offers an expanded email stolen vessel notifications. Email notice of stolen vessel fliers, in conjunction with our proven successful stolen vessel simultaneous broadcast facsimile system, allows Smart Phone users to now receive color photos of our stolen vessel fliers as soon as released.

Todd & Associates maintains the largest online stolen vessel database on the Internet and works in conjunction with law enforcement and insurance companies to track stolen boats until recovered. Over the past 25 years, the fax broadcast/Internet posting of stolen boats has averaged a 52% recovery rate.

Todd & Associates, Inc. is a San Diego based Marine Survey and Investigation Company, which Todd Schwede founded in 1992, and provides nationwide and international marine inspection services and forensic support to the Marine Insurance and general marine industry. Todd & Associates is committed to using leading edge technologies to help insurance companies resolve claims quickly and efficiently. Infrared Thermography, Stolen boat investigations, Accident and Damage Investigations & Reconstruction, Forensic Engineering and, Litigation Support, and traditional Condition/Valuation Surveys are also provided by Todd & Associates.

Todd & Associates, Inc also is a pioneer in Infrared Thermography and has unique experience with carbon masts and composite construction.

Todd Schwede, AMS, CMI, CPII
Bill Trenkle, Marine Engineer, AMS, CMI, Level 1 Thermographer
Maxwell Schwede, AMS, CMI, CFE, Level III Thermographer
Captain Bill Dials, AMS, CMI (Arizona/Nevada associate)

Todd & Associates, Inc.
2390 Shelter Island Drive Suite 220
San Diego, CA 92106
Voice: (619) 226-1895 - (800) 325-8061 Fax: (619) 223-8942
stolenboats@boatman.com - <http://www.boatman.com>